



MONTHLY SUMMARY OF STATISTICS

WESTERN
AUSTRALIA

EMBARGO: 11:30AM (CANBERRA TIME) FRI 29 JAN 1999

C O N T E N T S

	<i>page</i>
Notes	2
 TABLES	
1 Population	4
2 Tourism	8
3 Employment	14
4 Retail	19
5 Construction	20
6 Production	23
7 Overseas Trade	27
8 Transport	29
9 Finance	30
10 Statistical Summary	31

- For more information about these and related statistics, contact Information Services on (08) 9360 5140 or refer to the back cover of this publication.

NOTES

FORTHCOMING ISSUES

<i>ISSUE</i>	<i>RELEASE DATE</i>
February 1999	26 February 1999
March 1999	31 March 1999
April 1999	30 April 1999



SYMBOLS AND OTHER USAGES

n.a.	not available
n.e.i.	not elsewhere included
n.p.	not available for publication but included in totals where applicable
n.y.a.	not yet available
—	nil or rounded to zero
..	not applicable
*	subject to sampling variability too high for most practical purposes
p	preliminary - figure or series subject to revision
r	figure or series revised since previous issue
—	break in continuity of series (where drawn between two consecutive figures or columns)



INQUIRIES

For information about other ABS statistics and services, please refer to the back of this publication.

For further information about these statistics, contact Information Services on (08) 9360 5140.

COLIN NAGLE
REGIONAL DIRECTOR, WESTERN AUSTRALIA

CONTENTS

Page

TABLES

Population

1.1	Estimated Resident Population	4
1.2	Components of Population Change	5
1.3	Registration of Births, Deaths, Marriages and Divorces	6
1.4	Rates of Births, Deaths, Marriages and Divorces	7

Tourism

2.1	Overseas Arrivals and Departures	8
2.2	Short-term Overseas Visitor Arrivals from Selected Countries	9
2.3	Short-term Overseas Visitor Arrivals by Air for Holiday	10
2.4	Short-term Departures of Residents to Selected Destinations	11
2.5	Short-term Departures of Residents by Air to Selected Destinations: Holiday	12
2.6	Tourist Accommodation	13

Employment

3.1	Labour Force Status: Seasonally Adjusted	14
3.2	Labour Force Status: Trend	15
3.3	Average Weekly Earnings of Employees: Trend	16
3.4	Industrial Disputes Causing Stoppage of Work	17
3.5	Wage and Salary Earners: Industry-Sector	18

Retail

4.1	Monthly Retail Turnover	19
-----	-------------------------	----

Construction

5.1	Dwelling Units Approved	20
5.2	Non-Residential Building Approved	21
5.3	Selected Housing Price Indexes: Perth	21
5.4	Price Index of Materials Used in Building Other Than House Building:Perth	22

Production

6.1	Livestock Slaughtered	23
6.2	Meat Produced	23
6.3	Wool Receivals and Live Sheep Exports	24
6.4	Energy Production	25
6.5	Mineral Exploration: Expenditure by Type of Mineral Sought	26
6.6	Mineral Production	26

Overseas Trade

7.1	Imports by Selected Divisions	27
7.2	Exports by Selected Divisions	28

Transport

8.1	New Motor Vehicle Registrations	29
8.2	Vehicle Registration Statistics	29

Finance

9.1	Private New Capital Expenditure by Selected Industry Groups	30
-----	---	----

Statistical Summary

10.1	Statistical Summary	31
------	---------------------	----

1.1

ESTIMATED RESIDENT POPULATION

	<i>Males</i>	<i>Females</i>	<i>Persons</i>
	no.	no.	no.
Financial Years			
1995–96	887 577	877 679	1 765 256
1996–97	904 382	893 488	1 797 870
1997–98 p	921 613	909 786	1 831 399
Calendar Years			
1995	879 564	869 755	1 749 319
1996	896 075	885 793	1 781 868
1997 p	911 537	900 552	1 812 089
Quarters			
Mar 97	901 491	890 790	1 792 281
Jun 97	904 382	893 488	1 797 870
Sep 97 p	908 282	897 414	1 805 696
Dec 97 p	911 537	900 552	1 812 089
Mar 98 p	917 629	906 190	1 823 819
Jun 98 p	921 613	909 786	1 831 399

Source: ABS Catalogue No. 3101.0 (Table 4).

ANALYSIS OF TABLE 1.1

The estimated resident population of Western Australia at 30 June 1998 was 1,831,399, an increase of 7,580 in the June quarter and 33,529 since 30 June 1997. The annual growth rate during the financial year 1997–98 was 1.9% compared with a rate of 1.8% for the previous twelve months.

1.2 COMPONENTS OF POPULATION CHANGE

	Natural increase	Net estimated overseas migration(a)	Net estimated interstate migration	Total increase
	no.	no.	no.	no.
Financial Years				
1995–96	13 953	12 339	4 066	31 469
1996–97	14 158	12 267	6 189	32 614
1997–98 p	13 556	15 247	4 726	33 529
Calendar Years				
1995	14 414	13 048	4 513	31 975
1996	13 980	12 334	5 683	31 997
1997 p	13 690	11 239	5 292	30 221
Quarters				
Mar 97	3 923	4 305	2 185	10 413
Jun 97	3 529	113	947	5 589
Sep 97 p	2 935	3 884	1 007	7 826
Dec 97 p	3 303	1 937	1 153	6 393
Mar 98 p	3 315	6 729	1 686	11 730
Jun 98 p	4 003	2 697	880	7 580

(a) Includes an adjustment for 'category jumping'.

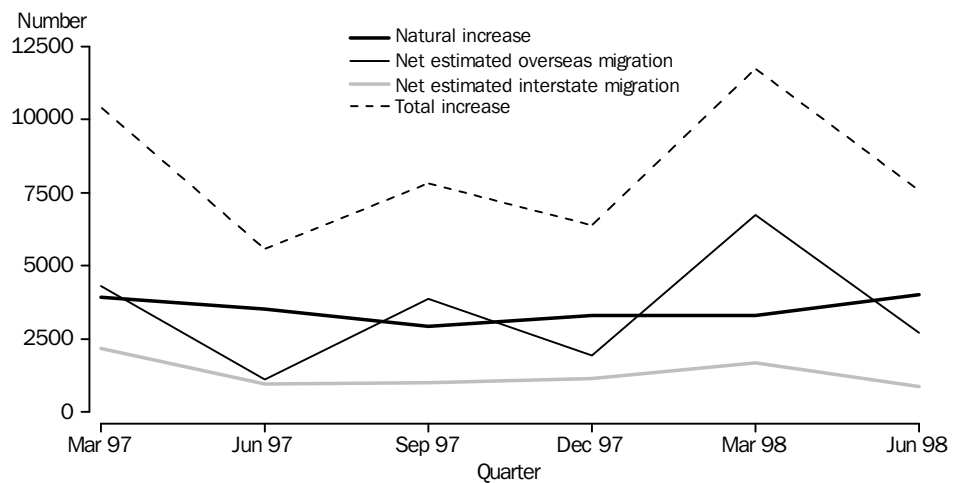
Source: ABS Catalogue No. 3101.0 (Table 2).

ANALYSIS OF TABLE 1.2

In the June quarter 1998, the population increased by 7,580 compared with an increase of 11,730 in the previous quarter. Natural increase was up 21% on the March quarter 1998. However, this was more than offset by falls of 60% and 48% in net estimated overseas and interstate migration, respectively.

In the financial year 1997–98, the population increased by 33,529 compared with an increase of 32,614 in the previous year.

COMPONENTS OF POPULATION CHANGE, WESTERN AUSTRALIA



Source: ABS Catalogue No. 3101.0.

1.3

REGISTRATION OF BIRTHS, DEATHS, MARRIAGES AND DIVORCES

	Live Births (a)	Infant Deaths (a)	Total Deaths (a)	Marriages	Divorces
Financial Years					
1995-96	24 614	140	10 661	r 10 178	5 195
1996-97	24 744	133	10 586	10 372	4 931
1997-98 p	24 534	125	10 978	10 699	5 112
Calendar years					
1995	24 817	133	10 403	10 404	5 040
1996	24 905	145	10 925	10 294	4 959
1997 p	24 600	125	10 910	10 456	5 046
Quarters					
Mar 97	6 282	27	2 359	2 904	1 233
Jun 97	6 032	28	2 503	2 562	1 133
Sep 97 p	6 164	28	3 229	1 458	1 360
Dec 97 p	6 122	42	2 819	3 532	1 320
Mar 98 p	5 737	32	2 422	2 968	1 219
Jun 98 p	6 511	23	2 508	2 741	1 213

(a) NOTE: With the exception of preliminary data estimates of births and deaths are included by State or Territory of usual residence and year of occurrence. For preliminary estimates births and deaths are included by State or Territory of usual residence and year of registration.

Source: ABS Catalogue No. 3101.0 (Tables 11, 12, 13, 14 & 15).

ANALYSIS OF TABLE 1.3

The number of live births in the June quarter 1998 increased by 774 or 13.5% on the previous quarter and was 479 or 7.9% more than the number in the same quarter of 1997.

Infant deaths in the June quarter 1998 decreased by 9 or 28.1% from the March quarter 1998, and were 17.9% lower than in the June quarter of the previous year.

Total deaths increased by 86 or 3.6% from the March quarter 1998, and were only 5 or 0.2% higher than the number in the June quarter 1997.

The number of marriages in the June quarter 1998 decreased by 7.6% (or 227) from the previous quarter, but was 7.0% higher than in the same quarter of 1997.

The number of divorces decreased slightly from 1,219 in the March quarter to 1,213 in the June quarter 1998, a decrease of 0.5%. The number was 7.0% higher than in the June quarter 1997.

1.4

RATES OF BIRTHS, DEATHS, MARRIAGES AND DIVORCES

	Live Births(a)	Infant Mortality(b)	Total Deaths(a)	Marriages(a)	Divorces(a)
Financial Years					
1995–96	14.1	5.7	6.1	5.8	3.0
1996–97	13.9	5.4	5.9	5.8	2.8
1997–98 p	13.5	5.1	6.1	5.9	2.8
Calendar years					
1995	14.3	5.4	6.0	6.0	2.9
1996	14.1	5.8	6.2	5.8	2.8
1997 p	13.7	5.1	6.1	5.8	2.8
Quarters					
Mar 97	14.1	4.3	5.3	6.5	2.8
Jun 97	13.4	4.6	5.6	5.7	2.5
Sep 97 p	13.7	4.5	7.2	3.2	3.0
Dec 97 p	13.5	6.9	6.2	7.8	2.9
Mar 98 p	12.6	5.6	5.3	6.5	2.7
Jun 98 p	14.3	3.5	5.5	6.0	2.7

(a) For financial and calendar years the rate is per 1,000 estimated resident population at 31 December and 30 June, respectively. For quarters, the rate is per 1,000 of the average of the previous and current quarterly populations.

(b) Infant deaths per 1,000 live births.

Source: ABS Catalogue No. 3101.0.

ANALYSIS OF TABLE 1.4

In the June quarter 1998, the infant mortality rate decreased to 3.5 infant deaths per 1,000 live births. This was 23.9% lower than the rate of 4.6 in the same quarter of the previous year.

The crude birth rate and crude death rate were both higher than in the March quarter 1998, but the crude marriage rate was lower and the crude divorce rate remained the same as in the previous quarter.

In comparison to the same quarter of the previous year, the crude birth rate, crude marriage rate and crude divorce rate were all higher, and the crude death rate was marginally lower.

For more information regarding tables on Vital statistics, please contact Carmel Ryan on (08) 9360 5385.

2.1 OVERSEAS ARRIVALS AND DEPARTURES

	SHORT-TERM ARRIVALS.....			LONG-TERM ARRIVALS.....		Total Arrivals
	Permanent Arrivals	West Australian Residents	Overseas Visitors	West Australian Residents	Overseas Visitors	
Financial Years						
1995-96	11 320	308 100	361 190	8 600	10 170	699 380
1996-97	10 520	334 750	397 610	8 880	11 650	763 410
1997-98	9 750	379 660	402 400	9 340	12 880	814 000
Months						
Jul 97	750	36 790	30 820	670	2 110	71 140
Aug 97	720	33 360	26 780	600	690	62 150
Sep 97	720	33 830	31 640	650	640	67 490
Oct 97	790	43 460	37 810	720	860	83 630
Nov 97	950	28 170	37 840	890	620	68 470
Dec 97	810	19 980	49 380	1 440	590	72 190
Jan 98	900	39 640	34 480	960	1 740	77 720
Feb 98	820	26 380	32 550	680	2 990	63 420
Mar 98	810	27 750	33 270	660	610	63 110
Apr 98	780	29 340	32 150	750	740	63 750
May 98	730	29 430	28 280	600	580	59 610
Jun 98	950	31 540	27 400	730	700	61 330
Jul 98	920	39 030	31 070	600	1 950	73 560
Aug 98	830	38 230	27 450	420	790	67 720
Sep 98	870	32 500	28 810	540	790	63 520

	SHORT-TERM DEPARTURES.....			LONG-TERM DEPARTURES.....		Total Departures
	Permanent Departures	West Australian Residents	Overseas Visitors	West Australian Residents	Overseas Visitors	
Financial Years						
1995-96	3 890	305 910	366 340	7 680	5 480	689 290
1996-97	3 610	339 990	389 530	8 080	6 180	747 390
1997-98	4 000	387 490	402 850	8 500	7 450	810 300
Months						
Jul 97	360	40 020	27 080	690	710	68 870
Aug 97	290	33 010	29 840	700	400	64 250
Sep 97	260	40 300	28 230	630	480	69 910
Oct 97	230	30 750	31 790	530	400	63 700
Nov 97	320	28 280	37 280	580	730	67 180
Dec 97	300	33 360	40 570	710	1 520	76 460
Jan 98	450	25 380	45 410	1 160	570	72 960
Feb 98	330	25 080	30 840	690	410	57 360
Mar 98	320	31 390	32 990	680	560	65 930
Apr 98	370	32 090	37 100	770	450	70 760
May 98	350	33 080	32 590	730	460	67 200
Jun 98	420	34 750	29 120	650	780	65 720
Jul 98	280	36 280	26 890	660	590	64 690
Aug 98	290	38 300	29 190	810	320	68 900
Sep 98	250	38 790	26 410	580	360	66 390

Source: ABS Unpublished Overseas Arrivals and Departures Table PMTRO001. Since figures have been rounded to the nearest ten, discrepancies may occur between sums of component items and totals.

ANALYSIS OF TABLE 2.1

The total of 63,520 overseas arrivals in September 1998 was 4,200 lower than in the previous month and 3,970 lower than in September 1997.

In September 1998, 32,500 Western Australian residents returned from short-term overseas visits, a decrease of 15.0% on August 1998. The 28,810 short-term overseas visitors arriving in Western Australia increased by 5.0% on August 1998.

There were 540 residents returning to Western Australia in September 1998, after a long-term stay overseas. This was a 28.6% increase on the previous month. Arrivals of long-term overseas visitors numbered 790, the same as in the previous month, and an increase of 150 on September 1997 figures.

Total departures were 66,390 in September 1998, a decrease of 3.6% on the previous month and a 5.0% decrease on September 1997.

The 38,790 short-term departures of Western Australian residents in September 1998 was an increase of 1.3% on August 1998, and a decrease of 3.7% on September 1997.

2.2 SHORT-TERM OVERSEAS VISITOR ARRIVALS FROM SELECTED COUNTRIES(a)

	COUNTRY OF ORIGIN.....					Total(b)
	New Zealand	UK & Ireland	Indonesia	Japan	Singapore	
Financial Years						
1995-96	24 200	59 220	49 270	30 120	64 690	361 180
1996-97	26 420	69 460	51 600	33 930	63 950	397 610
1997-98	26 410	81 390	34 380	32 620	73 140	402 400
Months						
Jul 97	2 090	3 070	6 730	2 560	3 880	30 820
Aug 97	2 250	3 120	2 610	4 060	3 940	26 780
Sep 97	2 560	5 240	2 350	3 190	5 800	31 640
Oct 97	3 320	8 240	3 290	2 480	6 240	37 810
Nov 97	2 350	8 840	2 670	2 650	6 920	37 840
Dec 97	2 520	12 330	3 300	3 260	8 650	49 380
Jan 98	1 420	8 350	3 790	2 930	3 900	34 480
Feb 98	1 150	9 630	2 160	2 910	3 660	32 550
Mar 98	2 010	8 900	970	3 200	6 000	33 280
Apr 98	2 150	6 300	2 250	2 060	7 630	32 150
May 98	2 470	3 820	2 470	2 010	6 400	28 280
Jun 98	2 110	3 540	1 770	1 290	10 110	27 400
Jul 98	3 120	4 040	2 900	3 360	4 080	31 070
Aug 98	1 930	4 010	1 930	4 570	4 310	27 450
Sep 98	2 850	5 460	1 670	2 470	4 100	28 820

(a) Comprises travellers whose intended or actual stay is less than twelve months.

(b) Total includes countries not listed in this table.

Source: ABS Unpublished Overseas Arrivals and Departures Table PMTR0013.

ANALYSIS OF TABLE 2.2

The total of 28,820 short-term overseas visitor arrivals in September 1998 represented an increase of 5.0% on August 1998.

Short-term visitor arrivals from Japan decreased by 46.0% on August 1998, and by 22.6% on September 1997 and represented 8.6% of all short-term visitor arrivals.

Short-term visitor arrivals from the UK and Ireland increased by 36.2% on August 1998, and by 4.2% on September 1997 and represented 18.9% of all short-term visitor arrivals.

2.3

SHORT-TERM OVERSEAS VISITOR ARRIVALS BY AIR, FOR HOLIDAY

	COUNTRY OF ORIGIN.....								Total(a)
	New Zealand	UK & Ireland	Indonesia	Japan	Malaysia	Singapore	Thailand	United States	
Financial Years									
1995-96	6 790	19 010	35 610	23 840	20 800	47 520	8 770	3 250	200 560
1996-97	6 670	24 050	33 870	27 870	23 600	45 350	10 230	2 590	215 820
1997-98	7 830	27 660	19 580	26 650	23 920	50 470	5 880	3 520	205 550
Months									
Jul 97	590	1 030	4 230	2 090	1 640	1 840	580	180	15 390
Aug 97	850	1 020	1 470	2 960	2 660	2 740	380	310	15 040
Sep 97	940	1 770	1 150	2 530	3 180	4 230	130	280	17 170
Oct 97	970	2 870	1 600	2 160	3 170	4 180	370	180	19 380
Nov 97	710	2 920	1 780	2 160	2 260	5 260	160	460	20 080
Dec 97	450	3 960	2 580	2 880	2 560	7 110	2 060	220	27 340
Jan 98	470	3 070	2 200	2 580	1 460	2 460	110	330	16 725
Feb 98	220	3 610	470	2 520	700	1 200	810	140	12 880
Mar 98	410	2 740	500	2 690	990	3 660	110	570	15 320
Apr 98	800	2 220	1 340	1 610	1 710	5 230	770	250	16 560
May 98	720	1 280	1 170	1 360	2 480	4 530	230	290	13 900
Jun 98	710	1 160	1 080	1 110	1 110	8 040	160	330	15 780
Jul 98	800	1 700	920	2 150	900	1 480	170	170	11 570
Aug 98	300	1 130	630	2 770	1 150	2 600	270	260	11 620
Sep 98	940	1 710	580	1 500	1 300	2 290	340	210	11 550

(a) Total includes countries not listed in this table.

Source: ABS Unpublished Overseas Arrivals and Departures Table PMTWAT31 for monthly figures and PMTRO031 for financial year figures.

ANALYSIS OF TABLE 2.3

A total of 11,550 short-term overseas visitors arrived by air for holidays in Western Australia in September 1998, a decrease of 32.7% on September 1997. Almost a fifth (19.8%) of these holiday makers were from Singapore.

2.4

SHORT-TERM DEPARTURES OF RESIDENTS TO SELECTED DESTINATIONS (a)

COUNTRY OF DESTINATION.....

	New Zealand	UK & Ireland	Indonesia	Malaysia	Singapore	Total(a)
Financial Years						
1995-96	25 100	44 070	68 860	22 780	29 430	305 910
1996-97	26 580	50 320	89 030	23 620	26 770	339 990
1997-98	30 360	54 190	103 090	25 820	34 520	387 490
Months						
Jul 97	2 110	7 360	10 790	3 140	2 720	40 020
Aug 97	1 650	4 920	10 470	2 260	3 380	33 010
Sep 97	2 450	5 090	12 940	2 180	3 400	40 300
Oct 97	2 470	3 190	10 870	1 840	2 260	30 750
Nov 97	1 950	2 840	8 100	2 060	2 660	28 280
Dec 97	5 380	4 550	6 530	2 340	2 310	33 360
Jan 98	2 630	2 260	6 060	1 990	2 590	25 380
Feb 98	2 720	2 420	6 980	2 100	2 700	25 080
Mar 98	2 590	4 370	8 780	1 880	3 940	31 390
Apr 98	3 390	4 490	6 690	2 160	2 590	32 090
May 98	1 470	6 460	6 920	1 520	2 790	33 080
Jun 98	1 530	6 230	7 960	2 350	3 210	34 750
Jul 98	2 420	5 100	10 700	2 640	2 880	36 280
Aug 98	1 460	6 330	11 350	2 380	3 260	38 300
Sep 98	3 110	4 400	12 740	2 310	2 980	38 790

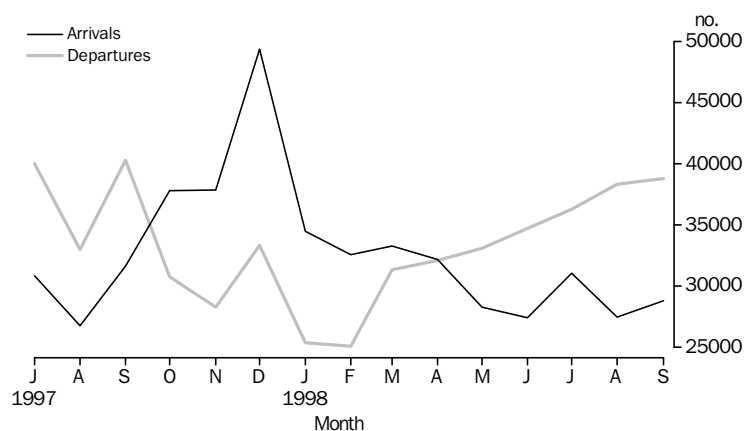
(a) Total includes countries not listed in this table.

Source: ABS Unpublished Overseas Arrivals and Departures Table PMTR0013.

ANALYSIS OF TABLE 2.4

In September 1998, 38,790 Western Australian residents departed for short-term periods overseas, an increase of 1.3% on August 1998, and a 3.7% decrease on September 1997. Short-term departures of residents to New Zealand increased by 113% on the previous month.

SHORT-TERM ARRIVALS OF OVERSEAS VISITORS AND DEPARTURES OF RESIDENTS



Source: ABS Unpublished Overseas Arrivals and Departures Table PMTR0013.

2.5 SHORT-TERM DEPARTURES OF RESIDENTS BY AIR TO SELECTED DESTINATIONS: HOLIDAY

COUNTRY OF DESTINATION.....

	New Zealand	UK & Ireland	Indonesia	Malaysia	Singapore	Thailand	United States	Total (a)
Financial Years								
1995-96	10 120	18 420	53 060	10 430	15 670	12 750	9 650	160 120
1996-97	10 860	23 760	72 640	10 660	13 480	9 790	9 540	186 540
1997-98	12 500	25 910	85 760	12 820	19 560	18 320	11 440	222 180
Months								
Jul 97	1 120	4 340	9 560	2 110	1 360	1 280	1 200	25 110
Aug 97	860	2 240	8 650	910	2 270	590	850	19 590
Sep 97	1 170	2 840	11 260	780	1 800	1 640	1 950	25 120
Oct 97	1 260	1 700	9 720	840	1 280	1 980	960	19 410
Nov 97	970	1 120	6 270	920	1 140	1 220	550	14 380
Dec 97	1 800	1 860	5 330	1 420	1 500	1 170	770	17 810
Jan 98	1 050	520	4 990	610	1 460	600	600	12 400
Feb 98	1 010	1 180	5 550	930	1 850	1 040	570	13 920
Mar 98	1 080	1 990	7 020	980	2 180	1 300	690	17 300
Apr 98	1 340	1 820	5 510	1 370	1 670	2 400	910	18 300
May 98	490	3 010	5 530	720	1 500	3 020	1 070	18 650
Jun 98	350	3 300	6 320	1 220	1 490	2 090	1 250	19 940
Jul 98	1 060	2 430	8 810	1 520	1 420	3 040	1 080	22 640
Aug 98	720	2 880	9 140	1 340	1 920	2 540	480	22 050
Sep 98	1 570	1 550	10 650	1 070	1 690	2 430	930	22 920

(a) Total includes countries not listed in this table.

Source: ABS Unpublished Overseas Arrivals and Departures Table PMTWAT31 for monthly figures and PMTR0031 for financial year figures.

ANALYSIS OF TABLE 2.5

There were 22,920 short-term departures by air of Western Australian residents for holidays abroad in September 1998. This was 3.9% more than in August 1998 and 8.8% less than in September 1997.

In September 1998, the number of Western Australians who departed for holidays in Singapore decreased by 12.0% over the previous month.

With 46.5% of all short-term departures of residents by air in September 1998, Indonesia continues to be the favoured holiday destination for Western Australians.

For more information regarding Overseas Arrivals and Departures, please contact Carmel Ryan on (08) 9360 5385.

2.6 TOURIST ACCOMMODATION

HOTELS, MOTELS, GUEST HOUSES AND SERVICED APARTMENTS....

	<i>Establishments</i>	<i>Guest rooms</i>	<i>Employment</i>	<i>Room occupancy rates</i>	<i>Guest arrivals</i>	<i>Takings from accommodation</i>
	Number	Number	Persons	%	'000	\$'000
Months						
Jan 98				59	201	29 620
Feb 98				57	172	25 017
Mar 98	294	16 596	9 685	59	191	28 190
Apr 98				56	203	26 415
May 98				57	188	28 348
Jun 98	293	16 643	9 678	50	168	23 029
Jul 98				57	209	28 897
Aug 98				59	215	30 078
Sep 98	298	17 015	9 950	63	234	29 762

Source: ABS Product No. 8635.5.40.001. (The December quarter 1997 issue of *Tourist Accommodation, Western Australia*, ABS Catalogue No. 8635.5, was the final issue of this publication).

Note: The scope of the ABS quarterly Survey of Tourist Accommodation (STA) has changed since the December quarter 1997. Some units will have been reclassified and as a result, data will not be strictly comparable with previously published data for particular accommodation types.

From the March quarter 1998, only those in-scope establishments with 15 or more rooms or units are covered by the survey.

From the March quarter 1998, survey results are aggregated to Tourism Regions as defined by relevant State and Territory Tourist Commissions or equivalent organisations.

As part of the future collection strategy of the STA, significant caravan parks, visitor hostels and remaining holiday flats, units and houses will be surveyed triennially, commencing with a year 2000 reference year.

For more information regarding the changes to the STA and the data available from this collection, please refer to the ABS publication Catalogue No. 8635.0.

For more information relating to Tourist Accommodation, please contact Pam Prince on 9360 5207.

3.1

LABOUR FORCE STATUS (AGED 15 YEARS AND OVER): Seasonally Adjusted

	Employed full-time	Total employed	Total unemployed	Unemployment rate	Participation rate
	'000	'000	'000	%	%
Males					
Oct 97	439.9	498.7	33.6	6.3	75.8
Nov 97	443.7	501.7	38.2	7.1	76.7
Dec 97	445.5	502.7	38.7	7.1	76.8
Jan 98	447.0	503.0	37.2	6.9	76.5
Feb 98	441.0	500.2	36.3	6.8	75.9
Mar 98	443.0	499.9	37.9	7.0	75.9
Apr 98	443.1	502.2	36.0	6.7	75.9
May 98	443.4	504.3	37.7	7.0	76.3
Jun 98	442.6	500.7	45.0	8.2	76.7
Jul 98	442.0	496.5	43.3	8.0	75.8
Aug 98	443.8	499.8	41.7	7.7	75.9
Sep 98	443.6	506.0	41.2	7.5	76.6
Oct 98	443.7	505.4	42.4	7.7	76.5
Nov 98	442.6	503.8	41.5	7.6	76.0
Dec 98	445.3	507.4	43.5	7.9	76.6
Females					
Oct 97	196.6	367.1	26.6	6.7	55.5
Nov 97	197.7	365.7	26.7	6.8	55.2
Dec 97	197.6	364.5	29.1	7.4	55.3
Jan 98	201.8	367.5	29.2	7.4	55.7
Feb 98	195.4	372.1	28.9	7.2	56.2
Mar 98	202.7	371.0	28.0	7.0	55.8
Apr 98	196.6	373.7	28.8	7.2	56.3
May 98	199.8	379.3	28.0	6.9	56.9
Jun 98	205.6	386.0	24.7	6.0	57.3
Jul 98	202.6	389.1	27.3	6.6	58.0
Aug 98	206.7	384.9	24.9	6.1	57.0
Sep 98	198.0	386.7	28.0	6.7	57.6
Oct 98	201.0	387.6	24.7	6.0	57.1
Nov 98	202.3	384.8	26.2	6.4	56.8
Dec 98	211.0	384.6	26.6	6.5	56.7
Persons					
Oct 97	636.5	865.8	60.2	6.5	65.6
Nov 97	641.4	867.4	64.9	7.0	65.9
Dec 97	643.1	867.2	67.8	7.2	66.0
Jan 98	648.8	870.5	66.4	7.1	66.0
Feb 98	636.4	872.3	65.2	7.0	66.0
Mar 98	645.7	870.8	65.9	7.0	65.8
Apr 98	639.8	875.9	64.8	6.9	66.0
May 98	643.2	883.7	65.8	6.9	66.6
Jun 98	648.2	886.7	69.6	7.3	66.9
Jul 98	644.6	885.5	70.6	7.4	66.8
Aug 98	650.5	884.8	66.6	7.0	66.4
Sep 98	641.6	892.7	69.1	7.2	67.0
Oct 98	644.7	893.1	67.2	7.0	66.8
Nov 98	644.9	888.6	67.8	7.1	66.4
Dec 98	656.2	891.9	70.1	7.3	66.6

Source: ABS Catalogue No. 6202.0.

ANALYSIS OF TABLE 3.1

The seasonally adjusted unemployment rate increased by 0.2 percentage points to 7.3% in December 1998.

The seasonally adjusted number of persons unemployed increased by 2,300 to 70,100, and the number of employed persons increased by 3,300 to 891,900.

Western Australia's seasonally adjusted participation rate for December 1998 increased 0.2 percentage points to 66.6%, and continues to be the highest of all the States.

3.2

LABOUR FORCE STATUS (AGED 15 YEARS AND OVER): Trend (a)

	Employed full-time	Total employed	Total unemployed	Unemployment rate	Participation rate
	'000	'000	'000	%	%
Males					
Oct 97	442.5	499.5	37.8	7.0	76.5
Nov 97	443.5	500.7	37.4	7.0	76.5
Dec 97	444.0	501.5	37.1	6.9	76.4
Jan 98	444.2	501.9	36.8	6.8	76.3
Feb 98	443.9	502.0	36.9	6.8	76.2
Mar 98	443.5	501.8	37.4	6.9	76.1
Apr 98	443.0	501.2	38.4	7.1	76.1
May 98	442.7	500.8	39.7	7.3	76.1
Jun 98	442.8	500.6	41.0	7.6	76.2
Jul 98	443.0	500.9	41.9	7.7	76.2
Aug 98	443.1	501.7	42.3	7.8	76.2
Sep 98	443.3	502.8	42.4	7.8	76.3
Oct 98	443.6	504.1	42.3	7.7	76.3
Nov 98	443.9	505.4	42.3	7.7	76.3
Dec 98	442.2	506.6	42.1	7.7	76.3
Females					
Oct 97	197.9	367.3	27.0	6.9	55.6
Nov 97	198.4	367.4	27.5	7.0	55.6
Dec 97	198.5	367.3	28.1	7.1	55.5
Jan 98	198.6	367.7	28.6	7.2	55.6
Feb 98	198.8	369.4	28.8	7.2	55.8
Mar 98	199.4	372.4	28.6	7.1	56.1
Apr 98	200.3	376.2	28.0	6.9	56.5
May 98	201.4	380.0	27.4	6.7	56.9
Jun 98	202.1	383.3	26.8	6.5	57.2
Jul 98	202.4	385.6	26.3	6.4	57.4
Aug 98	202.5	386.7	26.1	6.3	57.4
Sep 98	202.7	386.8	26.1	6.3	57.3
Oct 98	203.2	386.5	26.1	6.3	57.2
Nov 98	204.0	386.0	26.1	6.3	57.0
Dec 98	204.9	385.2	26.3	6.4	56.8
Persons					
Oct 97	640.4	866.8	64.8	7.0	66.0
Nov 97	641.9	868.1	65.0	7.0	66.0
Dec 97	642.5	868.8	65.2	7.0	65.9
Jan 98	642.7	869.7	65.4	7.0	65.9
Feb 98	642.7	871.5	65.7	7.0	66.0
Mar 98	642.8	874.2	66.0	7.0	66.1
Apr 98	643.3	877.4	66.4	7.0	66.3
May 98	644.1	880.8	67.0	7.1	66.4
Jun 98	644.9	883.9	67.7	7.1	66.6
Jul 98	645.4	886.5	68.3	7.2	66.7
Aug 98	645.7	888.4	68.5	7.2	66.8
Sep 98	646.0	889.6	68.4	7.1	66.8
Oct 98	646.8	890.6	68.4	7.1	66.7
Nov 98	647.8	891.4	68.4	7.1	66.6
Dec 98	649.0	891.9	68.4	7.1	66.5

(a) Trend estimates for the previous six months have been revised.

Source: ABS Catalogue No. 6202.0.

ANALYSIS OF TABLE 3.2

The trend estimate of the unemployment rate remained at 7.1% in December 1998.

For more information regarding these tables, please contact Information Inquiries on (08) 9360 5140.

3.3

AVERAGE WEEKLY EARNINGS OF EMPLOYEES: Trend

	FULL TIME ADULTS.....		ALL PERSONS
	<i>Ordinary time earnings</i>	<i>Total earnings</i>	<i>Total earnings</i>
	\$	\$	\$
Males			
16 May 97	759.50	819.50	703.70
16 Aug 97	771.60	829.50	711.70
21 Nov 97	780.90	839.00	721.20
20 Feb 98	790.00	850.90	732.60
15 May 98	801.10	864.90	742.40
21 Aug 98	814.20	879.80	749.40
Females			
16 May 97	593.20	605.10	419.60
16 Aug 97	598.70	610.00	419.60
21 Nov 97	603.60	615.10	415.70
20 Feb 98	609.20	621.40	411.70
15 May 98	617.20	630.00	409.70
21 Aug 98	627.70	640.20	410.40
Persons			
16 May 97	698.60	741.00	562.60
16 Aug 97	706.80	747.20	563.80
21 Nov 97	714.10	754.70	564.20
20 Feb 98	723.10	766.10	567.80
15 May 98	734.80	780.20	572.60
21 Aug 98	748.60	795.50	577.60

Source: ABS Catalogue No. 6302.0.

3.4 INDUSTRIAL DISPUTES CAUSING STOPPAGE OF WORK

WORKERS INVOLVED.....

	<i>Number of Disputes</i>	<i>Directly</i>	<i>Indirectly</i>	<i>Total</i>	<i>Working days lost</i>
	Number	'000	'000	'000	'000
Calendar Year					
1995	70	99.7	0.0	99.7	101.6
1996	54	36.2	0.0	36.2	47.3
1997	71	30.9	0.9	31.7	60.1
Months					
Jun 97	6	4.9	0.0	4.9	3.7
Jul 97	10	1.5	0.0	1.5	0.8
Aug 97	5	0.5	0.0	0.5	0.8
Sep 97	10	1.8	0.0	1.8	1.6
Oct 97	6	2.2	0.0	2.2	1.0
Nov 97	13	1.8	0.0	1.8	3.4
Dec 97	9	0.4	0.0	0.4	0.4
Jan 98	6	0.8	0.0	0.8	2.3
Feb 98	6	0.6	0.1	0.7	1.1
Mar 98	5	2.1	0.0	2.1	4.2
Apr 98	6	r 3.5	0.0	r 3.5	r 4.4
May 98	r 6	r 4.1	0.0	r 4.1	r 2.3
Jun 98	9	4.0	0.0	4.0	5.8
Jul 98	3	0.4	0.0	0.4	0.5
Aug 98	10	7.0	0.0	7.0	11.7

Source: Industrial Disputes, Unpublished Data.

Note: The waterfront dispute which commenced on 7 April 1998 has been excluded from the industrial disputes statistics in this publication, because the industrial action that took place did not constitute an 'industrial dispute' as defined by the ABS for purposes of collecting and compiling these statistics.

In ABS industrial disputes statistics, an industrial dispute is defined as a withdrawal from work by a group of employees (i.e. a strike), or a refusal by an employer or a number of employers to permit some or all of their employees to work (i.e. a lockout), each withdrawal or refusal being made in order to enforce a demand, to resist a demand, or to express a grievance. That is, the statistics cover employee strikes and employer lockouts, but do not cover other action due to labour disputes. (See *Industrial Disputes, Australia*, cat no. 6321.0 Explanatory Notes and Glossary for more details.)

3.5

WAGE AND SALARY EARNERS: INDUSTRY-SECTOR

	NUMBER OF EMPLOYEES.....						GROSS EARNINGS
	Feb 1997	May 1997	Aug 1997	Nov 1997	Feb 1998	May 1998	Jun qtr 1998
	'000	'000	'000	'000	'000	'000	\$m
Industry							
Mining	28.9	30.1	29.3	30.5	28.2	29.3	445.3
Manufacturing	74.0	67.7	69.1	65.5	65.6	66.5	596.2
Electricity, gas and water supply	7.0	7.0	6.8	6.9	6.8	6.5	83.4
Construction	29.8	34.2	31.4	35.1	37.6	43.0	541.6
Wholesale trade	43.3	45.7	39.7	42.3	40.3	41.2	374.4
Retail trade	104.0	108.2	105.8	110.4	102.6	103.7	448.3
Accommodation, cafes & restaurants	37.9	37.0	38.9	41.6	40.5	38.6	177.7
Transport and storage	23.5	25.2	23.6	24.4	22.7	24.4	229.8
Communication services	10.4	10.1	9.8	9.6	9.5	9.6	121.7
Finance & insurance	23.4	24.6	24.0	23.3	27.7	29.7	252.4
Property & business services	85.6	87.2	89.2	83.7	86.6	101.0	759.3
Government administration and defence	32.9	31.5	30.6	31.9	31.9	31.5	319.0
Education	59.9	63.7	63.3	67.3	61.8	64.4	538.0
Health & community services	67.9	67.9	70.2	70.8	71.1	72.4	512.6
Cultural & recreational services	16.5	15.3	18.3	15.5	15.9	19.6	85.8
Personal & other services	26.9	23.2	23.0	23.9	22.8	24.4	165.2
All industries (a)	673.6	680.1	674.5	684.5	673.5	707.4	5 666.1
Sector							
Private	528.3	534.0	530.0	535.8	530.6	561.6	4 218.6
Public	145.3	146.1	144.5	148.8	142.8	145.8	1 447.4

	Feb 1998.....			May 1998.....		
	Full-time	Part-time	Persons	Full-time	Part-time	Persons
	'000	'000	'000	'000	'000	'000
Industry						
Mining	26.5	* 1.7	28.2	28.0	* 1.4	29.3
Manufacturing	61.0	4.7	65.6	60.5	* 6.0	66.5
Electricity, gas and water supply	6.6	0.2	6.8	6.3	0.2	6.5
Construction	33.9	* 3.7	37.6	39.8	* 3.2	43.0
Wholesale trade	31.2	* 9.1	40.3	29.7	* 11.5	41.2
Retail trade	41.6	61.0	102.6	43.1	60.6	103.7
Accommodation, cafes & restaurants	18.3	22.2	40.5	16.8	21.7	38.6
Transport and storage	19.5	* 3.2	22.7	21.3	* 3.1	24.4
Communication services	8.1	1.4	9.5	8.0	1.6	9.6
Finance & insurance	21.1	6.6	27.7	21.5	* 8.3	29.7
Property & business services	51.2	* 35.4	86.6	63.0	* 38.0	101.0
Government administration and defence	25.9	6.0	31.9	25.5	6.0	31.5
Education	39.5	22.3	61.8	39.0	25.4	64.4
Health & community services	34.0	37.1	71.1	34.6	37.8	72.4
Cultural & recreational services	5.9	10.0	15.9	6.2	* 13.4	19.6
Personal & other services	15.8	6.9	22.8	16.5	7.9	24.4
All industries (a)	441.7	231.8	673.5	461.3	246.2	707.4
Sector						
Private	336.1	194.5	530.6	356.5	205.1	561.6
Public	105.6	37.2	142.8	104.8	41.0	145.8

(a) Includes employees of government agencies classified to Agriculture, forestry and fishing.

Source: ABS Catalogue No. 6248.0.

4.1

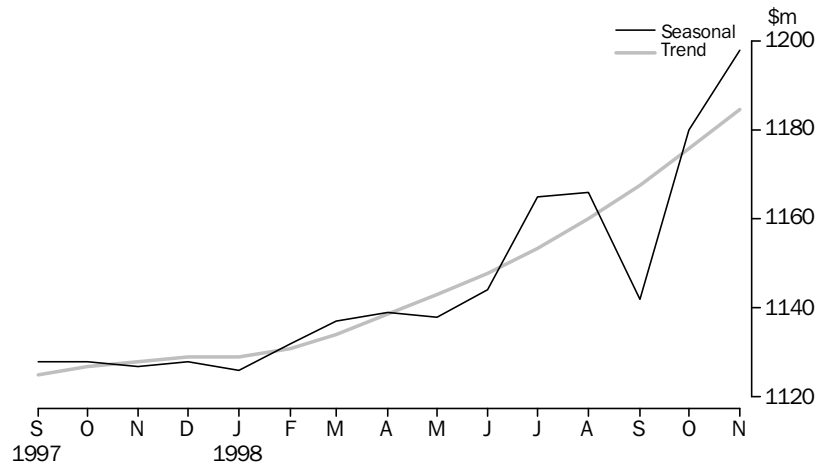
MONTHLY RETAIL TURNOVER

	Food	Department stores	Clothing and soft goods	Other household goods	Recreational goods
	\$m	\$m	\$m	\$m	\$m
Months					
Sep 97	437.8	94.7	44.3	173.5	57.7
Oct 97	478.5	104.8	53.8	182.4	60.4
Nov 97	464.4	110.3	50.8	190.3	60.2
Dec 97	546.4	188.3	70.6	227.9	86.5
Jan 98	503.8	87.6	54.0	184.5	56.4
Feb 98	451.5	72.9	42.6	156.5	52.1
Mar 98	475.8	83.4	48.1	176.8	51.9
Apr 98	488.4	101.7	48.7	171.9	54.7
May 98	497.4	100.5	52.2	172.5	54.4
Jun 98	465.8	92.0	49.3	180.8	53.4
Jul 98	511.0	106.7	54.0	159.7	60.9
Aug 98	506.3	90.6	48.5	153.1	57.6
Sep 98	505.7	92.3	49.9	150.5	58.5
Oct 98	536.8	108.9	55.7	175.1	62.0
Nov 98	510.0	116.0	56.1	172.1	63.8

	Hospitality and services	Other	Total	Seasonally adjusted	Trend estimates
	\$m	\$m	\$m	\$m	\$m
Months					
Sep 97	171.9	111.6	1 091.5	1 128.0	1 125.3
Oct 97	171.1	113.1	1 164.2	1 127.8	1 127.1
Nov 97	168.3	109.4	1 153.7	1 126.9	1 128.0
Dec 97	193.1	151.7	1 464.4	1 127.8	1 128.6
Jan 98	155.0	96.4	1 137.8	1 126.0	1 129.3
Feb 98	145.0	87.0	1 007.6	1 132.3	1 130.9
Mar 98	153.2	88.5	1 077.7	1 136.8	1 134.3
Apr 98	148.7	87.0	1 101.1	1 139.0	1 138.6
May 98	152.5	90.4	1 120.0	1 138.0	1 143.0
Jun 98	139.6	88.4	1 069.3	1 144.3	1 147.8
Jul 98	156.3	93.3	1 142.0	1 165.3	1 153.4
Aug 98	161.1	91.1	1 108.2	1 165.8	1 160.0
Sep 98	161.2	98.6	1 116.6	1 142.4	1 167.6
Oct 98	184.4	107.8	1 230.7	1 180.4	1 175.8
Nov 98	171.8	111.7	1 201.5	1 198.0	1 184.7

Source: ABS Catalogue No. 8501.0.

MONTHLY RETAIL TURNOVER



Source: ABS Catalogue No. 8501.0.

5.1

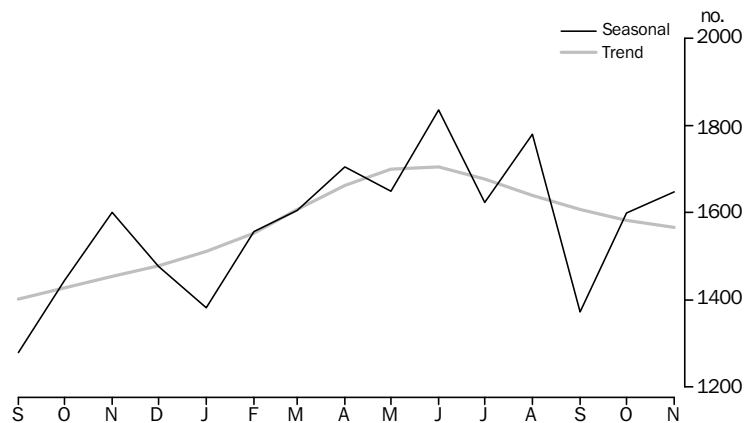
DWELLING UNITS APPROVED

	NEW HOUSES.....		NEW OTHER RESIDENTIAL BUILDINGS.....		TOTAL (a).....	
	Dwelling Units	Value	Dwelling Units	Value	Dwelling Units	Value
	No.	\$m	No.	\$m	No.	\$m
Financial years						
1995-96	12 212	1 148.3	3 527	272.4	15 854	2 386.7
1996-97	13 632	1 348.9	2 013	175.8	15 742	2 901.8
1997-98	15 828	1 634.2	2 526	222.0	18 460	2 943.8
Months						
Sep 97	1 216	129.0	95	10.3	1 328	211.7
Oct 97	1 323	136.4	183	14.2	1 508	267.2
Nov 97	r 1 355	142.2	184	12.4	1 541	250.2
Dec 97	1 214	123.4	171	11.7	1 412	221.6
Jan 98	976	105.1	r 178	17.2	1 155	193.7
Feb 98	1 162	120.2	r 278	18.6	1 441	224.4
Mar 98	1 363	143.7	r 380	29.1	1 747	251.4
Apr 98	r 1 376	144.1	r 196	19.1	1 576	218.0
May 98	r 1 504	151.9	r 288	43.6	1 794	318.3
Jun 98	r 1 831	183.3	r 218	18.4	2 054	286.7
Jul 98	r 1 548	163.2	r 151	16.3	1 707	282.8
Aug 98	1 483	155.7	r 248	32.8	1 735	256.1
Sep 98	r 1 256	134.4	r 150	15.1	1 413	229.9
Oct 98	1 461	160.6	169	15.2	1 634	288.1
Nov 98	1 401	149.5	229	28.5	1 649	272.4

(a) Includes alterations, additions, conversions and non-residential buildings.

Source: ABS Catalogue No. 8731.5.

TOTAL DWELLING UNITS APPROVED



Source: ABS Catalogue No. 8731.5.

5.2

NON-RESIDENTIAL BUILDING APPROVED

	<i>Private</i>	<i>Public</i>	<i>Total</i>
	\$m	\$m	\$m
Financial Years			
1995-96	692.1	111.0	803.1
1996-97	773.9	430.0	1204.5
1997-98	706.7	193.3	899.8
Months			
Sep 97	54.3	2.3	56.5
Oct 97	64.6	33.7	98.3
Nov 97	70.5	8.9	79.4
Dec 97	57.3	13.0	70.3
Jan 98	46.3	11.3	57.6
Feb 98	59.8	9.3	69.1
Mar 98	60.2	2.3	62.4
Apr 98	33.7	8.6	42.3
May 98	74.6	31.5	106.1
Jun 98	62.4	8.8	71.1
Jul 98	65.5	20.3	85.9
Aug 98	39.9	11.4	51.3
Sep 98	60.8	3.0	63.8
Oct 98	78.0	14.4	92.4
Nov 98	64.0	13.0	77.0

Source: ABS Catalogue No. 8731.5.

For more information regarding Building Approvals, please contact Pam Prince on (08) 9360 5932.

5.3

SELECTED HOUSING PRICE INDEXES: PERTH

	<i>Materials used in house building</i>	<i>Established homes</i>	<i>Project homes</i>
Financial Years			
1995-96	114.8	108.2	101.6
1996-97	115.3	109.2	101.3
1997-98	115.9	113.3	102.2
Quarters			
Jun 97	115.8	110.9	101.2
Sep 97	116.0	112.2	101.3
Dec 97	115.8	112.8	101.4
Mar 98	115.7	113.7	102.5
Jun 98	115.9	114.4	103.6
Sep 98	116.1	115.4	104.9

Base of each index: 1989-90 = 100.0.

Source: ABS Catalogue Nos. 6408.0 and 6416.0.

5.4

PRICE INDEX OF MATERIALS USED IN BUILDING OTHER THAN HOUSE BUILDING: PERTH

SPECIAL SERIES.....

	<i>All groups</i>	<i>All Electrical materials</i>	<i>All Mechanical services</i>	<i>All Plumbing materials</i>
Financial Years				
1995-96	113.2	113.0	112.3	120.1
1996-97	114.6	110.6	113.3	119.2
1997-98	114.6	109.3	113.4	124.6
Quarters				
Jun 97	115.2	111.0	112.9	121.6
Sep 97	115.3	111.0	113.1	124.7
Dec 97	114.8	109.9	113.3	124.9
Mar 98	114.2	107.2	113.2	124.6
Jun 98	114.2	109.2	113.8	124.1
Sep 98	114.2	107.9	115.0	124.0

SELECTED MAJOR BUILDING MATERIALS.....

	<i>Structural timber</i>	<i>Clay bricks</i>	<i>Ready mixed concrete</i>	<i>Structural steel</i>	<i>Aluminium windows</i>
Financial Years					
1995-96	109.3	120.7	115.0	107.5	118.1
1996-97	106.6	124.1	120.1	113.9	117.0
1997-98	106.8	127.8	117.4	116.5	117.9
Quarters					
Jun 97	107.2	125.5	120.1	116.1	118.8
Sep 97	107.2	127.4	118.8	116.1	118.8
Dec 97	107.4	127.4	117.2	116.1	118.8
Mar 98	106.4	127.6	116.8	116.7	117.0
Jun 98	106.1	128.8	116.8	116.9	117.0
Sep 98	106.5	131.4	115.9	117.6	117.0

Base of each index 1989-90 = 100.0.

Source: ABS Catalogue No. 6407.0.

For more information regarding these tables, please contact Peter Hodgson on (08) 9360 5922.

6.1

LIVESTOCK SLAUGHTERED ('000)

	CATTLE.....			OTHER.....			
	Bulls, bullocks, steers	Cows, heifers	Total (excluding calves)	Calves	Sheep	Lambs	Pigs
Financial Years							
1995-96	218.0	181.9	399.9	3.2	2 833.3	1 594.0	562.8
1996-97	192.3	214.5	406.8	5.6	2 635.2	2 081.2	550.2
1997-98	198.5	249.6	448.1	5.6	2 717.4	1 856.5	550.0
Quarters							
Jun 97	39.9	47.9	87.8	1.4	570.1	565.0	146.6
Sep 97	46.0	55.0	101.0	1.3	631.8	528.0	136.8
Dec 97	58.7	64.1	122.9	1.3	820.7	527.2	128.8
Mar 98	48.5	74.0	122.5	1.7	738.6	377.3	136.4
Jun 98	45.3	56.4	101.7	1.3	526.3	423.9	147.9
Sep 98	45.1	60.7	105.8	1.3	369.0	453.2	146.6

Note: From June 1998, the collection frequency of this information changed from monthly to quarterly.

Source: ABS Catalogue No. 7215.0.

6.2

MEAT PRODUCED (a)(Tonnes Carcass Weight)

	Beef	Veal	Mutton	Lamb	Pig meat
Financial Years					
1995-96	94 859	213	57 428	28 139	35 341
1996-97	91 369	319	52 164	35 701	38 837
1997-98	102 482	312	56 442	33 581	35 499
Quarters					
Jun 97	19 497	84	11 278	9 915	10 761
Sep 97	23 388	76	13 267	9 387	9 025
Dec 97	28 991	74	17 362	9 513	8 189
Mar 98	27 546	89	15 029	6 868	8 433
Jun 98	22 557	73	10 785	7 814	9 852
Sep 98	25 001	78	7 399	8 346	9 703

(a) Red meat is shown in carcass weight and excludes offal.

Note: From June 1998, the collection frequency of this information changed from monthly to quarterly.

Source: ABS Catalogue No. 7215.0.

For more information regarding these tables, please contact Information Inquiries on

(08) 9360 5140.

6.3

WOOL RECEIVALS AND LIVE SHEEP EXPORTS

	RECEIVALS OF TAXABLE WOOL BY BROKERS AND DEALERS(a)		EXPORT OF LIVE SHEEP (b).....		
	<i>Bales</i>	<i>Tonnes</i>	<i>Quantity</i>	<i>Gross Value</i>	<i>Gross Weight</i>
	'000		'000	\$'000	'000t
Financial Years					
1995-96	931 048	165 842	4 690.6	181 069	232.3
1996-97	909 768	r 160 020	3 747.5	136 613	188.5
1997-98 p	r 699 492	r 153 883	r 3 021.0	r 121 801	r 154.3
Quarters					
Jun 97 p	n.r.	r 26 626	r 657.9	r 25 384	31.5
Sep 97 p	r 205 354	r 45 291	635.4	25 026	32.0
Dec 97 p	r 198 369	44 340	r 891.7	35 627	r 47.3
Mar 98 p	r 195 422	41 000	760.8	r 30 216	r 38.7
Jun 98 p	100 347	r 23 252	r 733.1	30 932	36.2
Sep 98 p	191 427	39 754	687.1	24 786	35.1

(a) Source: National Council of Wool Selling Brokers.

(b) Source: ABS FASTTRACCS Service.

Note: From June 1998, the collection frequency of this information changed from monthly to quarterly.

For more information regarding this table, please contact Information Inquiries on (08) 9360 5140.

6.4

ENERGY PRODUCTION

	Coal(a)	Electricity generated	Gas for distribution(b)	Crude oil(c)(d)	Natural gas(d)
	'000 tonnes	million kWh	million MJ	mega-litres	million m ³
Financial Years					
1995-96	5 897	17 422	r 186 658	9 676	16 766
1996-97	5 557	r 16 738	r 204 257	15 974	16 713
1997-98	5 709	17 203	230 201	17 561 p	18 004 p
Quarters					
Jun 97	1 270	r 4 021	r 53 247	3 938 p	3 952 p
Sep 97	1 417	4 271	56 580	4 589 p	4 633 p
Dec 97	1 528	4 155	58 095	4 465 p	4 676 p
Mar 98	1 405	4 608	57 285	3 975 p	4 432 p
Jun 98	1 359	4 169	58 241	4 533 p	4 263 p
Sep 98	1 249	4 259	n.p.	4 619 p	4 822 p

(a) Source: Department of Minerals and Energy.

(b) Available for issue through mains.

(c) Includes condensate.

(d) Source: Australian Bureau of Agriculture and Resource Economics.

*For more information regarding these tables, please contact
Pam Prince on (08) 9360 5207.*

6.5

MINERAL EXPLORATION: EXPENDITURE BY TYPE OF MINERAL SOUGHT

	METALLIC MINERALS.....			NON-METALLIC MINERALS.....		Total minerals
	Base metals(a)	Gold	Other	Diamonds	Other	
	\$m	\$m	\$m	\$m	\$m	
Financial Years						
1995-96	89.0	367.8	6.9	33.8	6.0	519.5
1996-97	88.1	531.7	n.a.	38.6	n.a.	704.7
1997-98	117.1	459.3	3.8	31.4	2.1	660.4
Quarters						
Jun 97	27.0	155.5	1.4	10.8	1.2	210.0
Sep 97	28.1	138.2	0.5	8.3	0.1	182.7
Dec 97	31.4	109.6	0.5	9.5	1.2	162.3
Mar 98	24.7	100.0	0.2	6.0	0.4	142.0
Jun 98	32.9	111.5	2.6	7.6	0.4	173.4
Sep 98	30.3	86.1	0.8	10.4	0.3	143.1

(a) Includes copper, lead, zinc, silver, nickel and cobalt.

Source: ABS Catalogue No. 8412.0.

6.6

MINERAL PRODUCTION

	Iron ore	Bauxite	Gold	Ilmenite	Nickel	Diamonds
	'000 tonnes	'000 tonnes	tonnes	'000 tonnes	'000 tonnes	'000 carats
Financial Years						
1995-96	143 489	28 250	206.5	1 871	105	42 566
1996-97	150 711	27 466	r 227.0	1 910	115	37 120
1997-98	r 155 485	28 673	r 240.5	2 172	134	r 43 046
Quarters						
Jun 97	38 667	7 144	59.7	490	30	9 399
Sep 97	38 917	7 148	59.0	538	33	10 423
Dec 97	41 052	7 038	r 63.1	536	33	13 317
Mar 98	39 465	7 175	r 60.8	556	33	9 573
Jun 98	r 36 050	7 312	r 57.5	543	36	r 9 733
Sep 98	35 458	7 195	56.3	563	38	9 000

Source: Australian Bureau of Agricultural and Resource Economics.

For more information regarding these tables, please contact
Pam Prince on (08) 9360 5207.

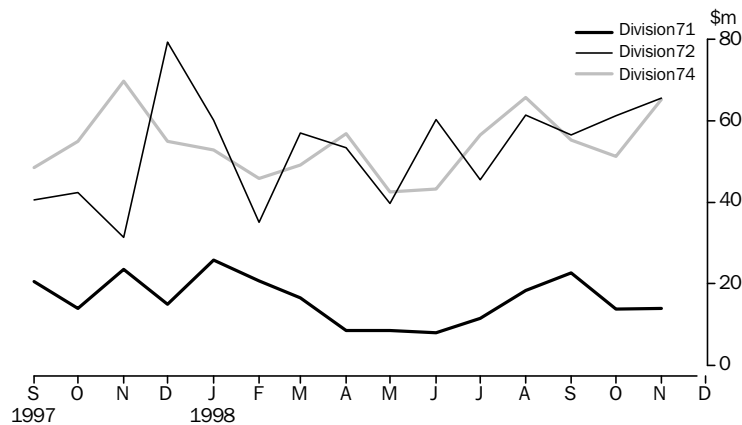
7.1

IMPORTS BY SELECTED DIVISIONS

	33	71	72	74	78
	<i>Petroleum, petroleum products, etc</i>	<i>Power generating machinery and equipment</i>	<i>Machinery specialised for particular industries</i>	<i>General industrial machinery and equipment</i>	<i>Road vehicles</i>
	\$m	\$m	\$m	\$m	\$m
Financial Years					
1995-96	769.1	356.1	510.0	346.1	794.3
1996-97	1 043.6	309.8	696.8	420.9	811.7
1997-98	800.1	208.0	618.8	596.7	1 051.9
Months					
Sep 97	90.2	20.6	40.6	48.5	86.2
Oct 97	70.7	14.0	42.4	55.0	100.2
Nov 97	80.9	23.6	31.4	69.7	87.4
Dec 97	91.4	15.0	79.4	55.0	94.1
Jan 98	54.1	25.9	60.1	52.9	87.9
Feb 98	59.3	20.8	35.0	45.8	74.9
Mar 98	51.7	16.6	57.0	49.2	91.2
Apr 98	49.8	8.5	53.3	56.9	84.7
May 98	57.0	8.5	39.7	42.5	86.5
Jun 98	60.7	8.1	60.4	43.2	94.8
Jul 98	66.2	11.5	45.5	56.5	81.9
Aug 98	80.9	18.4	61.3	65.7	88.4
Sep 98	64.0	22.7	56.4	55.2	69.1
Oct 98	57.1	13.9	61.2	51.2	94.8
Nov 98	64.3	14.0	65.5	65.2	70.8

Source: ABS FASTTRACCS Service.

IMPORTS BY SELECTED DIVISION



Source: ABS FASTTRACCS Service.

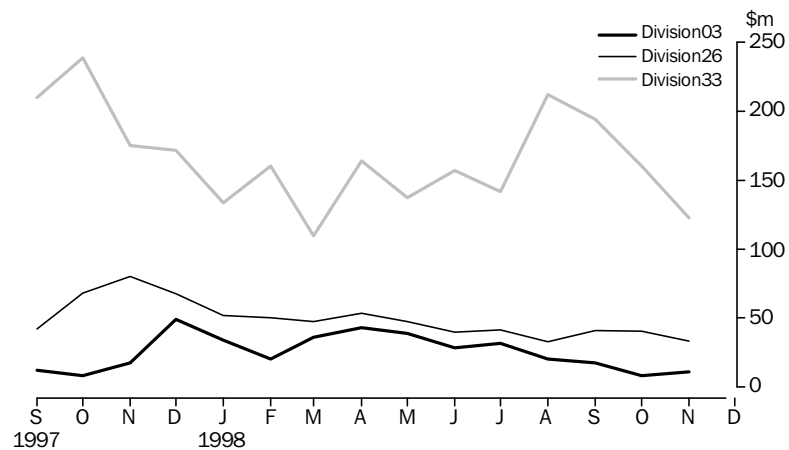
7.2

EXPORTS BY SELECTED DIVISIONS

	03	04	26	28	33
	<i>Fish, crustaceans, molluscs, etc</i>	<i>Cereals and cereal preparations</i>	<i>Textile fibres and waste (excluding yarn or fabric)</i>	<i>Metalliferous ores and metal scrap</i>	<i>Petroleum, petroleum products etc.</i>
	\$m	\$m	\$m	\$m	\$m
Financial Years					
1995-96	364.6	1 874.8	695.3	3 219.0	1 589.0
1996-97	371.3	1 667.6	646.5	3 614.6	1 942.8
1997-98	337.2	1 651.0	655.3	4 219.1	2 046.8
Months					
Sep 97	12.1	103.8	42.2	355.1	209.7
Oct 97	8.4	138.9	68.4	313.7	238.6
Nov 97	17.8	116.7	80.2	368.8	175.1
Dec 97	49.1	196.4	67.5	399.1	171.5
Jan 98	34.0	211.5	51.7	308.4	133.6
Feb 98	20.3	146.2	50.1	319.7	160.4
Mar 98	36.3	108.9	47.7	334.9	109.8
Apr 98	43.3	153.0	53.7	364.6	164.1
May 98	38.8	136.4	47.3	381.3	137.2
Jun 98	28.5	170.7	39.9	375.2	156.8
July 98	31.8	118.5	41.4	362.9	141.5
Aug 98	20.4	197.0	32.7	406.7	211.7
Sep 98	17.7	149.1	40.8	435.2	193.7
Oct 98	8.2	130.3	40.5	365.5	160.4
Nov 98	10.9	113.1	33.4	368.2	122.7

Source: ABS FASTTRACCS Service.

EXPORTS BY SELECTED DIVISION



Source: ABS FASTTRACCS Service.

For further information regarding these tables, please contact Information Inquiries on (08) 9360 5140.

8.1

NEW MOTOR VEHICLE REGISTRATIONS (a)

	WESTERN AUSTRALIA.....					PERTH STATISTICAL DIVISION.....	
	Passenger vehicles	Light commercial vehicles	Trucks and buses	Motorcycles and scooters Total(b)	Motorcycles and scooters	Motorcycles and scooters Total(b)	Motorcycles and scooters
Financial Years							
1995-96	51 319	10 838	2 324	64 481	2 441	51 514	1 648
1996-97	56 984	10 828	2 207	70 019	2 692	54 721	1 837
1997-98	67 675	11 486	2 207	81 456	3 103	63 131	2 104
Months							
Sep 97	5 339	786	172	6 297	196	4 977	129
Oct 97	6 335	935	219	7 489	436	5 832	352
Nov 97	5 435	923	175	6 533	290	5 066	189
Dec 97	5 844	946	187	6 977	300	5 356	180
Jan 98	4 860	845	157	5 862	232	4 437	168
Feb 98	5 143	956	191	6 290	258	4 763	166
Mar 98	5 745	1 017	197	6 959	241	5 285	148
Apr 98	5 059	929	202	6 190	290	4 782	200
May 98	6 144	1 108	204	7 456	233	5 768	152
Jun 98	7 362	1 380	235	8 977	234	6 902	173
Jul 98	6 064	937	238	7 239	264	5 702	173
Aug 98	5 417	783	186	6 386	277	5 147	179
Sep 98	5 400	790	188	6 378	263	5 062	169
Oct 98	5 448	866	201	6 515	281	5 132	n.y.a.
Nov 98	5 436	820	186	6 442	343	5 079	n.y.a.

(a) Excludes plant and equipment, caravans and trailers. (b) Excludes motor cycles.

Source: Unpublished New Motor Vehicle Registrations (9303.5.40.001).

8.2

VEHICLE REGISTRATION STATISTICS (a)

	PASSENGER VEHICLES.....		OTHER VEHICLES.....		TOTAL.....	
	Original	Trend	Original	Trend	Original	Trend
Months						
Sep 97	5 339	5 428	958	1 098	6 297	6 559
Oct 97	6 335	5 495	1 154	1 107	7 489	6 657
Nov 97	5 435	5 510	1 098	1 122	6 533	6 690
Dec 97	5 844	5 472	1 133	1 135	6 977	6 656
Jan 98	4 860	5 452	1 002	1 151	5 862	6 630
Feb 98	5 143	5 510	1 147	1 165	6 290	6 677
Mar 98	5 745	5 665	1 214	1 183	6 959	6 825
Apr 98	5 059	5 883	1 131	1 198	6 190	7 033
May 98	6 144	6 003	1 312	1 199	7 456	7 203
Jun 98	7 362	6 048	1 615	1 195	8 977	7 242
Jul 98	6 064	5 967	1 175	1 178	7 239	7 145
Aug 98	5 417	5 800	969	1 152	6 386	6 951
Sep 98	5 400	5 612	978	1 120	6 378	6 731
Oct 98	5 448	5 442	1 067	1 087	6 515	6 530
Nov 98	5 436	5 285	1 007	1 058	6 443	6 343

(a) Excludes motorcycles, plant and equipment, caravans and trailers.

Source: Unpublished New Motor Vehicle Registrations (9303.5.40.001).

For more information regarding these tables, please contact Cheryl Smith on

(08) 9360 5242.

9.1

PRIVATE NEW CAPITAL EXPENDITURE BY SELECTED INDUSTRY GROUPS

	SELECTED INDUSTRY.....			TOTAL.....	
	<i>Mining</i>	<i>Manufacturing</i>	<i>Other selected industries</i>	<i>Original</i>	<i>Seasonally adjusted</i>
Financial Years					
1995-96	4 285	1 046	2 575	7 907	7 899
1996-97	4 158	625	1 834	6 617	6 627
1997-98	5 756	1 049	1 956	8 760	8 746
Quarters					
Jun 97	1 168	153	424	1 745	1 666
Sep 97	1 190	194	426	1 810	1 966
Dec 97	1 489	337	552	2 377	2 161
Mar 98	1 473	240	479	2 191	2 353
Jun 98	1 604	278	500	2 383	2 265
Dec 98	1 337	421	632	2 390	2 617

Source: ABS Catalogue No. 5646.0.

For further information, please contact Ian Mackley on (08) 9360 5115

10.1

STATISTICAL SUMMARY

WESTERN AUSTRALIA.....

<i>Indicator</i>	<i>Period</i>	<i>Unit</i>	<i>Current Australian figure</i>	<i>Current figure</i>	<i>Change from last period (%)</i>	<i>Figure one year ago</i>	<i>Change from one year ago(%)</i>
Population							
Estimated resident population	Jun qtr 98 p	'000	18 751.0	1 831.4	0.4	1 797.9	1.9
Natural increase	Jun qtr 98 p	No.	31 830	4 003	20.8	3 529	13.4
Tourism							
<i>Hotels, motels etc and serviced apartments</i>							
Guest arrivals	Sep qtr 98	'000	7 869	658	0.2	n.a.	n.a.
Guest rooms available	Sep qtr 98	No.	179 068	17 015	2.2	16 415	3.7
Room occupancy rates	Sep qtr 98	%	59	60	11.1	59	2.4
<i>Overseas visitors</i>							
Short-term arrivals	Sep 98	No.	323 900	28 810	5.0	31 640	-8.9
Long-term arrivals	Sep 98	No.	7 220	790	0.0	640	23.4
<i>Resident Departures</i>							
Short-term departures	Sep 98	No.	313 500	38 790	1.3	40 300	-3.7
Long-term departures	Sep 98	No.	5 310	580	-28.4	630	-7.9
Employment							
<i>Employed persons</i>							
Trend	Dec 98	'000	8 681.0	891.9	0.1	868.8	2.7
<i>Unemployed persons</i>							
Trend	Dec 98	'000	722.8	68.4	0.0	65.2	4.9
<i>Participation rate</i>							
Trend	Dec 98	%	63.2	66.5	-0.2	65.9	0.9
<i>Unemployment rate</i>							
Trend	Dec 98	%	7.7	7.1	0.0	7.0	1.4
<i>Full-time adult average weekly earnings</i>							
<i>Trend</i>							
Males	Aug 98	\$	841.80	879.89	1.7	829.50	6.1
Females	Aug 98	\$	667.40	640.20	1.6	610.00	5.0
Persons	Aug 98	\$	778.10	795.50	1.9	747.20	6.5
Retail							
<i>Monthly retail turnover</i>							
Original	Nov 98	\$m	11 936.7	1 201.5	-2.2	1 153.7	4.1
Trend	Nov 98	\$m	11 788.3	1 184.7	1.4	1 128.0	5.0
Construction							
<i>Building Approvals</i>							
Dwelling Units	Nov 98	No	13 122	1 649	0.9	1 541	7.0
Value of all building	Nov 98	\$m	2 848.9	272.4	-5.4	250.2	8.9
<i>House Price Indexes</i>							
Materials used in house building	Sep qtr 98	Index No.	119.4	116.1	0.2	116.0	0.1
Established houses	Sep qtr 98	Index No.	126.9	115.4	0.9	112.2	2.9
Project homes	Sep qtr 98	Index No.	111.4	104.9	1.3	101.3	3.6
Mineral Exploration							
Gold	Sep qtr 98	\$m	135.3	86.1	-22.8	138.2	-37.7
Other minerals	Sep qtr 98	\$m	100.6	57.0	-7.9	44.5	28.1
Overseas Trade							
Imports	Nov 98	\$m	8 540.1	860.7	-17.7	658.6	30.7
Exports	Nov 98	\$m	7 281.9	1 885.9	-16.2	1 886.4	0.0
Transport							
<i>Passenger vehicle registrations</i>							
Original	Nov 98	No.	57 161	5 436	-0.2	5 435	0.0
Trend	Nov 98	No.	55 235	5 285	-1.5	5 510	-4.1
<i>Total registrations</i>							
Original	Nov 98	No.	67 840	6 443	-1.1	6 533	-1.4
Trend	Nov 98	No.	65 899	6 343	-2.0	6 690	-5.2
Finance							
<i>Private New Capital Expenditure</i>							
Original	Sep qtr 98	\$m	11 893	2 390	0.3	1 810	32.0
Seasonally adjusted	Sep qtr 98	\$m	12 530	2 617	15.5	1 966	33.1

SELF-HELP ACCESS TO STATISTICS

PHONE Call 1900 986 400 for the latest statistics on CPI, Labour Force, Earnings, National Accounts, Balance of Payments and other topics. (Call cost is 75c per minute)

INTERNET <http://www.abs.gov.au>

LIBRARY A range of ABS publications is available from public and tertiary libraries Australia wide. Contact your nearest library to determine whether it has the ABS statistics you require.

WHY NOT SUBSCRIBE?

PHONE +61 1300 366 323

FAX +61 3 9615 7848

CONTACTING THE ABS

ABS provides a range of services, including: a telephone inquiry service; information consultancy tailored to your needs; survey, sample and questionnaire design; survey evaluation and methodological reviews; and statistical training.

<i>INQUIRIES</i>	<i>By phone</i>	<i>By fax</i>
Canberra	02 6252 6627	02 6253 1404
Sydney	02 9268 4611	02 9268 4668
Melbourne	03 9615 7755	03 9615 7798
Brisbane	07 3222 6351	07 3222 6283
Perth	08 9360 5140	08 9360 5955
Adelaide	08 8237 7400	08 8237 7566
Hobart	03 6222 5800	03 6222 5995
Darwin	08 8943 2111	08 8981 1218

POST Client Services, ABS, PO Box 10, Belconnen, ACT 2616

EMAIL client.services@abs.gov.au



2130550001993
ISSN 0727-2367

RRP \$17.50